



# 9D8N Jiuzhaigou Cultural Tour

(CODE:MCN9W)

**GUARANTEE**  
No Shopping  
Stop Throughout

## H I G H L I G H T S

### Discovery

- The fairyland on earth: Jiuzhaigou
- Sichuan: the Source of Mingjiang River, Songpan Ancient City, Huanglong scenic area
- Chengdu: Imperial City Mosque, Jinli, Dujiangyan, Wenmiaoshan street, Panda breeding base, Heming Teahouse, Huanglongxi

### Special arrangement

- Jiuzhaigou Tibetan and Qiang party
- Sichuan Opera Face Changing

### Delicacies

- Muslim meals are arranged throughout (Notes: A small space is reserved for guests after lunch every day, and 20-30 minutes are arranged for guests to worship)

### Accommodations

- Arranged Local 5 stars hotel during whole journey



**DAY 1 SINGAPORE – CHENGDU STAY: LOCAL 5 STARS XIN LIANG HOTEL OR SIMILAR CLASS**  
Assemble at Singapore Changi Airport for your flight to **Chengdu**. Check into the hotel upon arrival.

**DAY 2 CHENGDU – JIUZHAIGOU (Breakfast/ Lunch/Dinner) STAY: LOCAL 5 STARS HILTON GARDEN INN JIUZHAIGOU HOTEL OR SIMILAR CLASS**

Transfer to High-speed Railway station, then proceed to Zhenjiangguan by high-speed railway. (Reference time and shift: C6376 10:30-12:21). After arriving at Zhenjiangguan, take a bus to Gonggangling, which is located on the border of Songpan County and Jiuzhaigou Valley in northwest Sichuan- **the Source of Minjiang River**. Then go to **Songpan Ancient City**, The ancient city is grand in scale and extraordinary in momentum, known as the "western Sichuan gateway", where the largest number of Muslim people live in Aba prefecture. back to the hotel after visit, participate in **Jiuzhaigou Tibetan and Qiang party** at your own cost in evening.



Source of Minjiang River



Songpan Ancient City



Jiuzhaigou Tibetan and Qiang party



**DAY 3 JIUZHAIGOU (Breakfast/Halal Lunch/Dinner)**  
**JIUZHAIGOU HOTEL OR SIMILAR CLASS**

**STAY:LOCAL 5 STARS HILTON GARDEN INN**

Today you will tour the **Jiuzhaigou Scenic Area**(Inclusive of scenic transportation). The scenic area is a valley of 40 kilometers in depth of the Minshan Mountains and got its name from the 9 Tibetan villages within the scenic area. It is also known as “fairyland” and “paradise on earth” and was declared as a UNESCO World Heritage Site. The natural scenery of Jiuzhaigou comprises of highland lakes, waterfalls, Snow Mountains and primitive forest. Its mountain peaks, colourful forest, emerald sea, waterfalls and the Tibetan tribe culture have been acclaimed as the “World’ s 5 Wonders” .



**Jiuzhaigou Scenic**



**Jiuzhaigou Scenic**



**Jiuzhaigou Scenic**

**DAY 4 JIUZHAIGOU – HUANGLONG – CHENGDU (Breakfast/Halal Lunch/Dinner)**  
**XIN LIANG HOTEL OR SIMILAR CLASS**

**STAY:LOCAL 5 STARS**

Today, you will visit **Huanglong Scenic Area**(inclusive cable car). Huanglong is renowned for its colorful pools, Snow Mountains, valley and primitive forest. It got name by its unique landscape forest resemble like a golden dragon.After the tour, go to the high-speed railway station, take the high-speed train(reference time and shift: C6354 18:08-19:52) back to Chengdu and check in the hotel to rest.



**Huanglong Scenic**



**Huanglong Scenic**



**Huanglong Scenic**

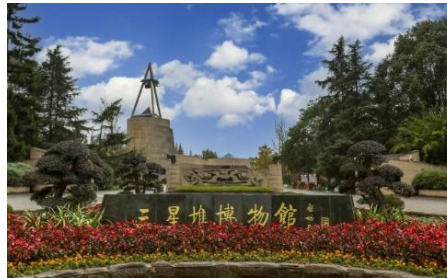
**DAY 5 CHENGDU (Breakfast/Lunch/Dinner)**  
**SIMILAR CLASS**

**STAY:LOCAL 5 STARS XIN LIANG HOTEL OR**

After breakfast, go to **Imperial City Mosque**, one of the famous mosques in southwest China, originally founded in the 16th century, is the largest mosque in Sichuan Province.After lunch, proceed to **Sanxingdui Museum**, a Bronze Age site in southwest China. Thousands of rare treasures have been found at the two large sacrificial pits of the Shang Dynasty. The bronze sacred tree, the gold staff, and the bronze large standing figure are all very shocking, allowing people to immerse themselves in the ancient Shu culture.Then go back to Chengdu. After dinner, go to **Jinli** (at your own expense). The night scene of Jinli Ancient Street is full of charm, with the three cultures and Sichuan traditional folk culture as the main culture, full of strong life atmosphere.



**Imperial City Mosque**

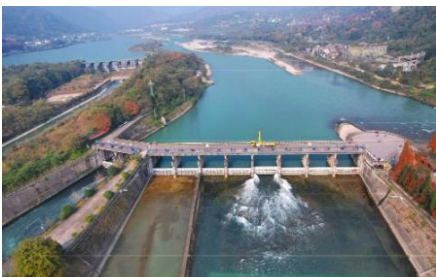


**Sanxingdui Museum**



**Jinli**

**DAY 6 CHENGDU (Breakfast/Lunch/Dinner) STAY:LOCAL 5 STARS XIN LIANG HOTEL OR SIMILAR CLASS**  
After breakfast, proceed to **Dujiangyan**, visit the **Dujiangyan Water Project**, The Dujiangyan Water Conservancy Project is listed as a "World Cultural Heritage", integrating history, culture and natural landscape. Visit **Wenmiaoshan Street**, both sides of the street are the collection of antique grocery stores. Then go to **Dujiangyan Mosque** for a visit. After dinner, go to watch **Sichuan Opera Face Changing** (at your own expense), which is one of the representatives of China's intangible cultural heritage



**Dujiangyan Water Project**



**Wenmiaoshan Street**



**Dujiangyan Mosque**

**DAY 7 CHENGDU (Breakfast/Lunch/Dinner) STAY:LOCAL 5 STARS XIN LIANG HOTEL OR SIMILAR CLASS**  
After breakfast in Chengdu, go to **Heming Teahouse in People's Park**. There are many tea shops in Chengdu. The Heming Teahouse, established in 1923, can be called the leader in the industry. Then go to the **Panda breeding base** (including sightseeing bus) to see the pandas up close. After lunch, go to **Huanglongxi ancient town** for a visit.



**Heming Teahouse in People's Park**



**Panda breeding base**



**Huanglongxi ancient town**

**DAY 8 CHENGDU (Breakfast, No tour guide and car) STAY:LOCAL 5 STARS XIN LIANG HOTEL OR SIMILAR CLASS**  
Free day at Chengdu. Independent travel recommended: There are many clothing, food, and theme stores in the shopping mall. Hotel is located near the train station and you can travel to other parts of Chengdu on your own easily. You can enjoy Sichuan meals and snacks in the shopping mall at your own expense.



CHAN BROTHERS  
GROUP OF COMPANIES



**Chunxi Street**



**IFS Shopping Mall**



**Broad and Narrow Alley**

## **DAY 9 CHENGDU – SINGAPORE**

Proceed to airport on time to catch the flight back to Singapore.

### **Compulsory Tours:**

**Jiuzhaigou Tibetan and Qiang party 2.Sichuan Opera Face Changing 3.Jinli street 4.Huanglongxi Ancient Town**

**RMB700/PERSON**

### **Remarks**

Revisions, if any, in itinerary are subject to the Company's Terms and Conditions, a copy of which is available at [www.ChansWorld.com/PackageTourTnCs](http://www.ChansWorld.com/PackageTourTnCs)

In particular, the Customer is requested to note the following:

Itinerary may be subject to change due to circumstances beyond the Company's control.

Accommodation in designated cities is subject to room availability.

Sequence of itinerary may be subject to change.

Proposed changes, if any, that are not accepted will be subject to the refund provisions set out in the Terms and Conditions.

During local or international public holidays such as Christmas Day, some attractions may be closed or will operate for half a day. Alternative arrangements will be made to visit these affected attractions on other days or they will be replaced with alternatives.

If halal meals are not available it will be replaced with vegetarian or seafood meal

The tour guide will speak English throughout the tour.

The hotel level is subject to local standards in China. Hotels without stars will be marked as X-star hotels for reference.

The tour guide will explain the whole journey in English; The order of the tour will be adjusted; Groups on different flights will probably merge into one.

If an extension is requested after the end of the trip, the return date determined by the airline ticket shall prevail before departure.

Updated 27 DEC 2023